



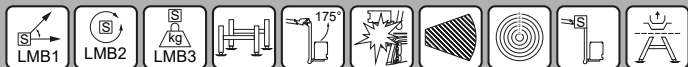
Heavy Series

PD215V

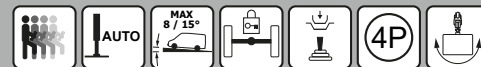
Telescopic platform with movable cage boom
mounted on chassis



Standard equipment



Extra equipment/Options



Technical specifications*

Max. working height:	21 m
Max. outreach:	14.9 m
Cage load capacity:	265 kg
Total weight:	12,000 kg
Payload capacity:	1500 kg
Platform rotation:	460°
Safe working angle:	2°/5°
Isolation:	1000V

* Exact specifications vary based on the individual build and chosen options.

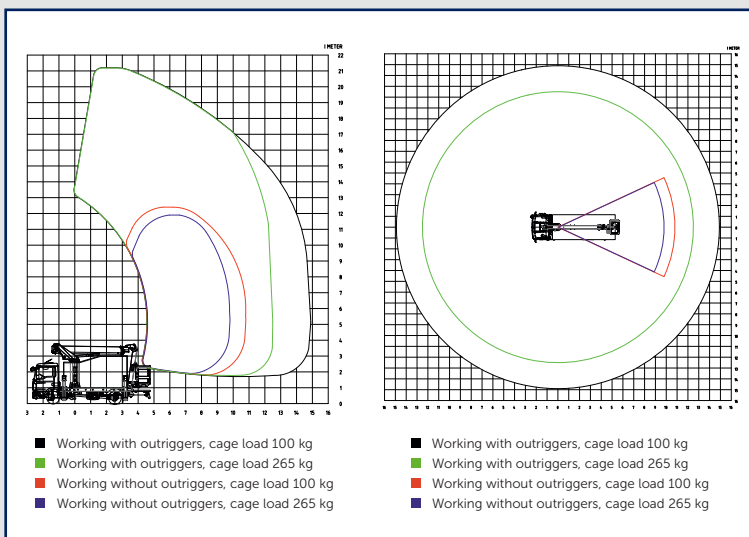
Description

The Heavy Series is our most powerful range of platforms. While all our platforms are extremely sturdy and stable, the Heavy Series feels the most robust and solid. Its booms are extremely sturdy, made from our most hard-wearing materials. The platforms in the Heavy series come with a 175° movable cage boom and can be fitted with 2x80° cage rotation as an option. The PD-series comes with a memory function for different settings as well, and it has lots of possibilities when it comes to options.

Additional specifications:

175° movable cage boom. H-frame outriggers. Electric/hydraulic control. Subframe and outriggers are galvanized. Home function. Operating without outriggers. Outriggers can be deployed even when the platform is not in transport position. Electronic cabin protection. Various flashlights. Ramp up/down functions on booms ensuring a long service life. Horizontal outreach depends on the total weight and deployment of outriggers.

Diagrams



Images



The images in this literature may show options. Danilift A/S reserves the right to change technical information without notice.